



OURSELVES & RELATIONSHIPS (Sex & Relationship Education)

This policy is based on the Norfolk Healthy School Standard guidance and DfE guidance document **Sex and Relationship Education Guidance** (ref DfE 0116/2000 and DfE November 2011). The DfE Sex and Relationship Education consultation recommend that all primary schools should have a sex and relationship education programme tailored to the age and physical and emotional maturity of the children

This policy was developed by the federation through a variety of consultation when developing this policy and the programme.

What Is Ourselves & Relationship (SRE)?

Ourselves & Relationships (SRE) is part of our Learning for Life (PSHE) Policy which teaches physical, sexual, moral and emotional understanding of relationships. Our curriculum emphasises the importance of stable and loving relationships, respect, love and care, for family life. It involves developing skills and forming positive beliefs, values and attitudes.

Principles and Values

In addition The Bridges Federation believe that Ourselves & Relationships (SRE) should:

- Be an integral part of our learning for life policy, beginning in reception year and teaching skills which will continue into adult life.
- Be an entitlement for all young people.
- Encourage every child to contribute to make our community and aims to support each individual as they grow and learn.
- Be set within this wider school context and supports family commitment and love, respect and affection, knowledge and openness (Family is a broad concept; not just one model, e.g. nuclear family). It includes a variety of types of family structure, and acceptance of different approaches.
- Encourage children and teachers to share and respect each other's views. We are aware of different approaches to sexual orientation, without promotion of any particular family structure. The important values are love, respect and care for each other.
- Generate an atmosphere where questions and discussion on sexual matters can take place without any stigma or embarrassment.
- Recognise that parents are the key people in teaching their children about sex, relationships and growing up. We aim to work in partnership with parents and children, consulting them about the content of programmes.
- Recognise that the wider community has much to offer and we aim to work in partnership with health professionals, social workers, peer educators and other mentors or advisers.

Ourselves and Relationships (SRE) in our Federation schools has three main strands:

- Attitudes and Values
- Personal and Social Skills
- Knowledge and Understanding

See Ourselves & Relationship Curriculum Wheel attached

Organisation and Content of Ourselves and Relationships Education

Every class will be taught through two hour long Ourselves & Relationships sessions each term (see wheels)



Access to all children in our schools

Any Ourselves & Relationships (SRE) lesson may consider questions or issues that some children will find sensitive. Before embarking on these lessons ground rules are established which prohibit inappropriate personal information being requested or disclosed by those taking part in the lesson. When children ask questions, we aim to answer them honestly, within the ground rules established at the start of the sessions. When it is felt that answering a specific question would involve information at a level inappropriate to the development of the rest of the children, the question may be dealt with individually at another time.

Support is offered to all teaching staff from the PSHE co-ordinator who will help with planning or delivery lessons if required.

Assessment is monitored by class teachers regarding knowledge and understanding, interpersonal skills, and attitudes.

Inclusion

Ethnic and Cultural Groups

We intend our policy to be sensitive to the needs of different ethnic groups. For some young people it is not culturally appropriate for them to be taught particular items in mixed groups. We will respond to parental requests and concerns.

Students with Special Needs

We will ensure that all young people receive sex and relationship education, and we will offer provision appropriate to the particular needs of all our students, taking specialist advice where necessary.

Sexual Identity and Sexual Orientation

We aim to deal sensitively and honestly with issues of sexual orientation, answer appropriate question and offer support. Young people, whatever their developing sexuality need to feel that sex and relationship education is relevant to them.

Right of Withdrawal of Students from Sex and Relationships Education

Some parents prefer to take the responsibility for aspects of this element of education. They have the right to withdraw their children from all or part of the Ourselves & Relationships (SRE) except for those parts included in the statutory Curriculum (i.e. in Science & PSHE lessons). We would make alternative arrangements in such cases. Parents are encouraged to discuss their decisions with staff at the earliest opportunity and may obtain a full copy of our curriculum document. Parents are welcome to review any Ourselves & Relationships (SRE) resources our schools use.

Confidentiality, Controversial and Sensitive Issues

All teachers are aware of child protection procedures.

In any case where child protection procedures are followed, the teacher will ensure that the children understand that if confidentiality has to be broken, they will be informed first.

Health professionals in our schools are bound by their codes of conduct in a one-to-one situation with an individual child, but in a classroom situation they must follow the Federation's Confidentiality Policy.

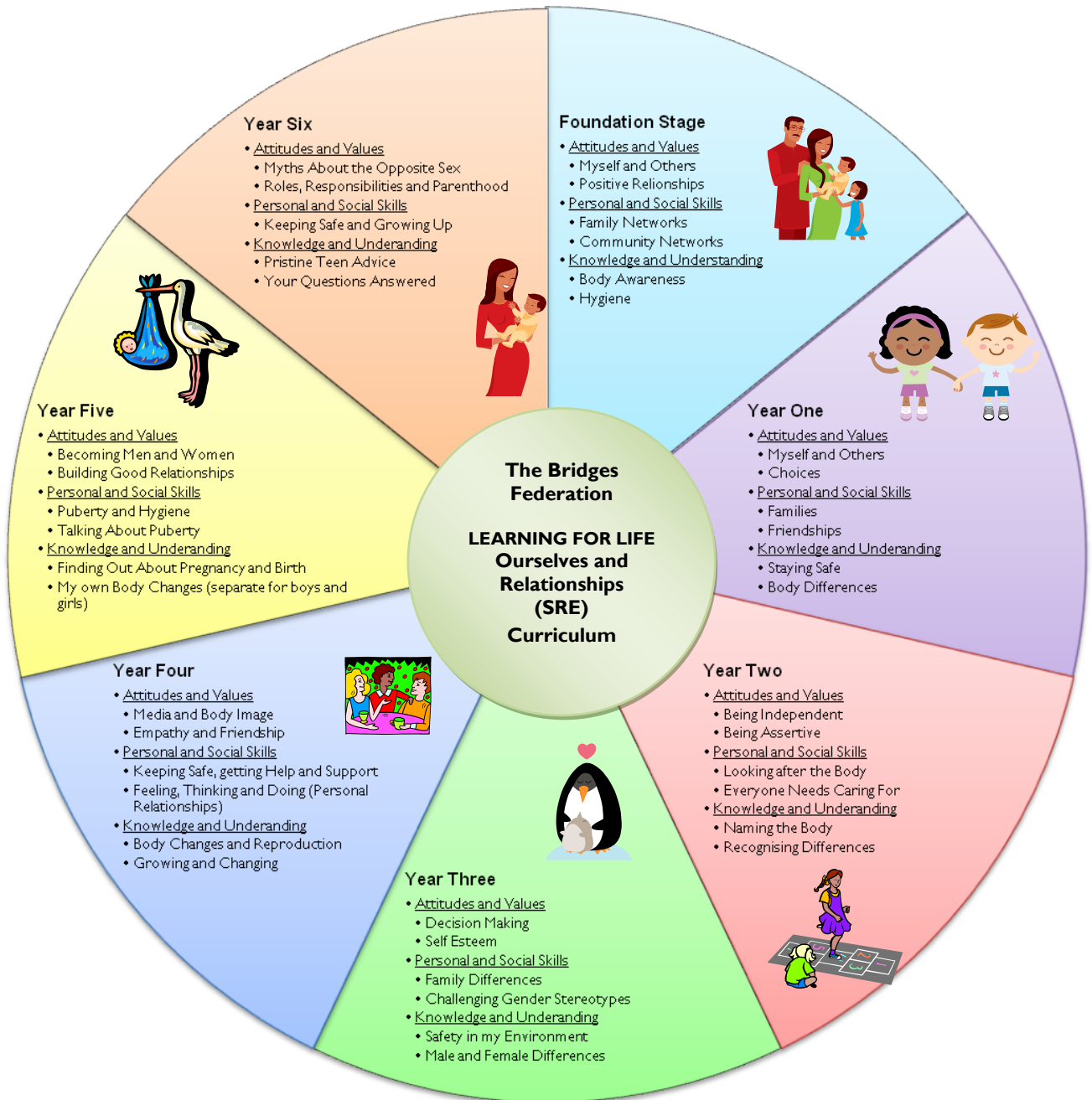
Monitoring and Evaluation of Ourselves and Relationships (SRE)

It is the responsibility of the PSHE Co-ordinator to oversee and organise the monitoring and evaluation of PSHE, in the context of the overall schools' plans for monitoring the quality of teaching and learning.

The Governors and senior management team is responsible for overseeing, reviewing the Ourselves & Relationships (Sex and Relationship Education) Policy.



Ourselves and Relationships (SRE)





Learning For Life (PSHE) Curriculum Overview

